

The information in this document is subject to change without notice and should not be construed as a commitment by ABB. ABB assumes no responsibility for any errors that may appear in this document.

Except as may be expressly stated anywhere in this document, nothing herein shall be construed as any kind of guarantee or warranty by ABB for losses, damages to persons or property, fitness for a specific purpose or the like.

In no event shall ABB be liable for incidental or consequential damages arising from use of this document.

This document and parts thereof must not be reproduced or copied without ABB's written permission, and contents thereof must not be imparted to a third party nor be used for any unauthorized purpose. Contravention will be prosecuted.

Additional copies of this document may be obtained from ABB at its then current charge.

© Copyright 2014 ABB ALL right reserved.

ABB Engineering (Shanghai) Ltd  
No.4528, Kangxin Highway, Kangqiao Town  
Pudong New District, Shanghai, 201319  
P.R.China

Latest revision:  
Rev02 Add R1.C1 floor cable information



Lab/Office:  
RA/RDP

IRB1100  
COPYRIGHT PAGE

Status:  
Approved

Plant: =  
Location: +  
Sublocation: +

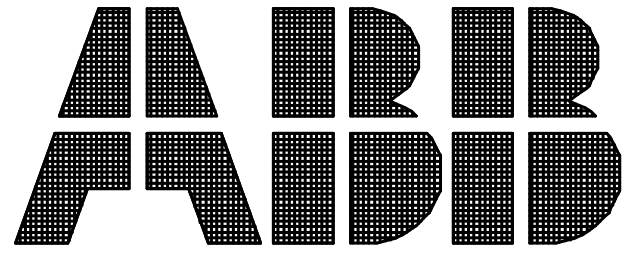
Document no.  
3HAC066314-009

Rev. Ind 02  
Page 1  
Next 2  
Total 17

Prepared by, date: CNQIL12

Approved by, date: CNKEWAN10

We reserve all rights in this document and in the information contained therein. Reproduction, use or disclosure to third parties without express authority is strictly forbidden. © Copyright 2003 ABB



Description : IRB1100  
Drawing number : 3HAC066314-009  
Drawing version : 02  
Date :

Customer :  
Year of construction :

Drawn by : CNQIL12  
Number of pages : 17

Latest revision:  
Rev02 Add R1.C1 floor cable information



Lab/Office:  
RA/RDP

IRB1100  
TITLE PAGE

Status:  
Approved

Plant: =  
Location: +  
Sublocation: +

Document no.  
3HAC066314-009

Rev. Ind  
02

Page 2  
Next 3  
Total 17

Prepared by, date: CNQIL12

Approved by, date: CNKEWAN10

We reserve all rights in this document and in the information contained therein. Reproduction, use or disclosure to third parties without express authority is strictly forbidden. © Copyright 2003 ABB



We reserve all rights in this document and in the information contained therein. Reproduction, use or disclosure to third parties without express authority is strictly forbidden. © Copyright 2003 ABB

Valid for:

This circuit diagram is valid for the following cable harness & board unit assemblies:

Harness for Robot:

- 3HAC060420-001 L Basic
- 3HAC060420-002 L Basic+CP/CS+4x4mm air hose
- 3HAC060420-003 L Basic+CP/CS+4x4mm air hose+Eth.

- 3HAC060419-001 U Basic
- 3HAC060419-002 U Basic+CPCS+4x4mm air
- 3HAC060419-003 U Basic+CPCS+4x4mm air+Eth.

- 3HAC060416-001 U Basic Ext.
- 3HAC060416-002 U Basic+CPCS+4x4mm air Ext.
- 3HAC060416-003 U Basic+CPCS+4x4mm air+Eth.Ext.

- 3HAC060418-001 Process hub Basic
- 3HAC060418-003 Process hub CPCS+4x4mm air
- 3HAC060418-005 Process hub CPCS+4x4mm air+Eth.

Board unit for Robot:

- 3HAC063968-001 SMB Unit
- 3HAC044075-001 Battery Unit

Latest revision:  
Rev02 Add R1.C1 floor cable information



Lab/Office:  
RA/RDP

IRB1100  
VALID FOR

Status:  
Approved

Plant: =  
Location: +  
Sublocation: +

Document no.  
3HAC066314-009

Rev. Ind 02  
Page 8  
Next 9  
Total 17

Prepared by, date: CNQIL12 Approved by, date: CNKEWAN10

2018-12-25 First version Ver00


2020-09-06 Rev01

Add twisted cable mark for motor phase/brake/Ethernet cables (page17,18,19,20,21,22,24)

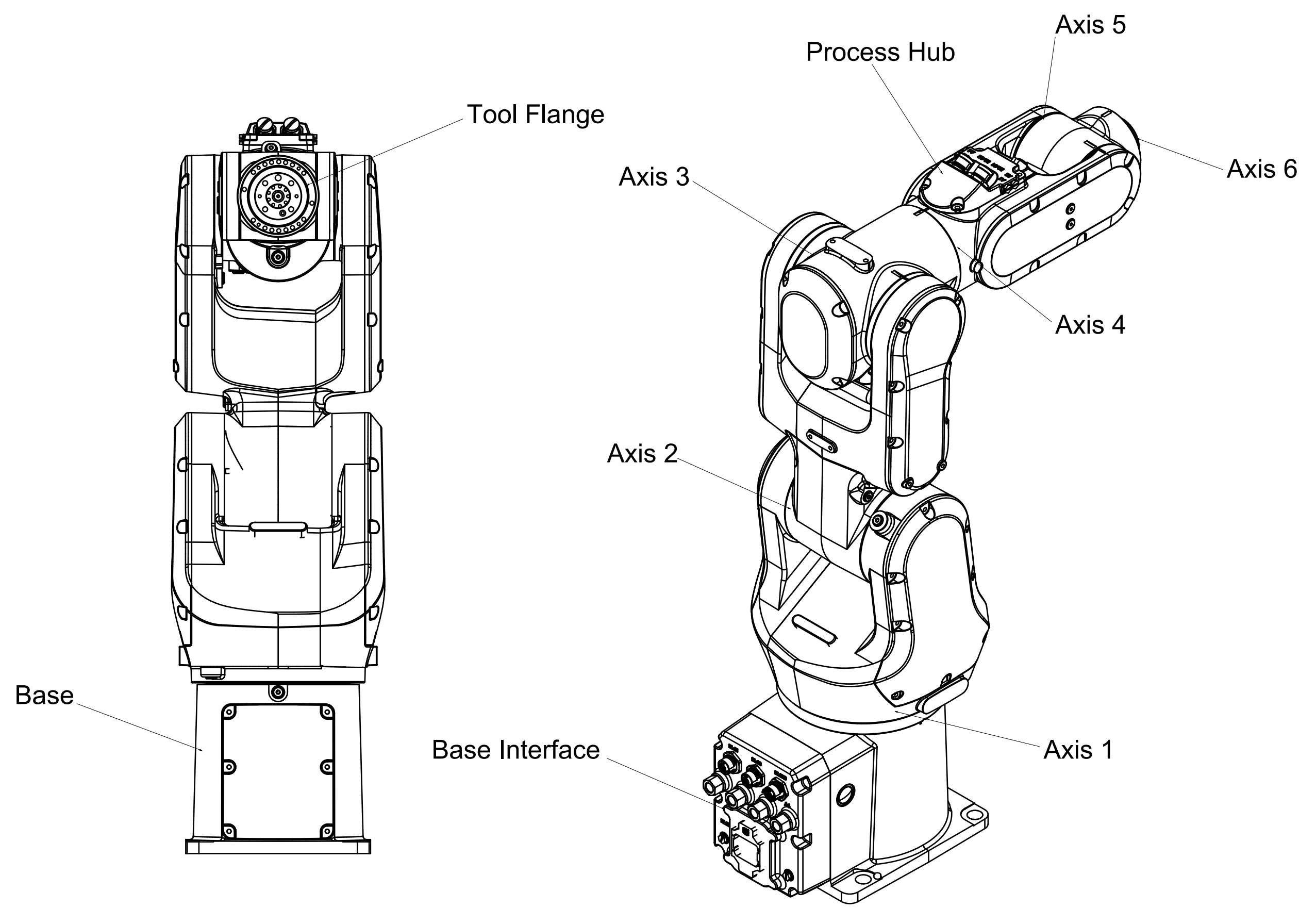
2021-01-13 Rev02

Add R1.C1 floor cable information (page23)

We reserve all rights in this document and in the information contained therein. Reproduction, use or disclosure to third parties without express authority is strictly forbidden. © Copyright 2003 ABB

|   |                              |   |                       |                                 |                     |   |                                |                |                               |
|---|------------------------------|---|-----------------------|---------------------------------|---------------------|---|--------------------------------|----------------|-------------------------------|
| Latest revision:<br>Rev02 Add R1.C1 floor cable information |                              |  | Lab/Office:<br>RA/RDP | IRB1100<br>REVISION INFORMATION | Status:<br>Approved | Plant: =<br>Location: +<br>Sublocation: + | Document no.<br>3HAC066314-009 | Rev. Ind<br>02 | Page 9<br>Next 10<br>Total 17 |
| Prepared by, date: CNQIL12                                  | Approved by, date: CNKEWAN10 |   |                       |                                 |                     |   |                                |                |                               |

We reserve all rights in this document and in the information contained therein. Reproduction, use or disclosure to third parties without express authority is strictly forbidden. © Copyright 2003 ABB



Latest revision:  
Rev02 Add R1.C1 floor cable information

Prepared by, date: CNQIL12      Approved by, date: CNKEWAN10



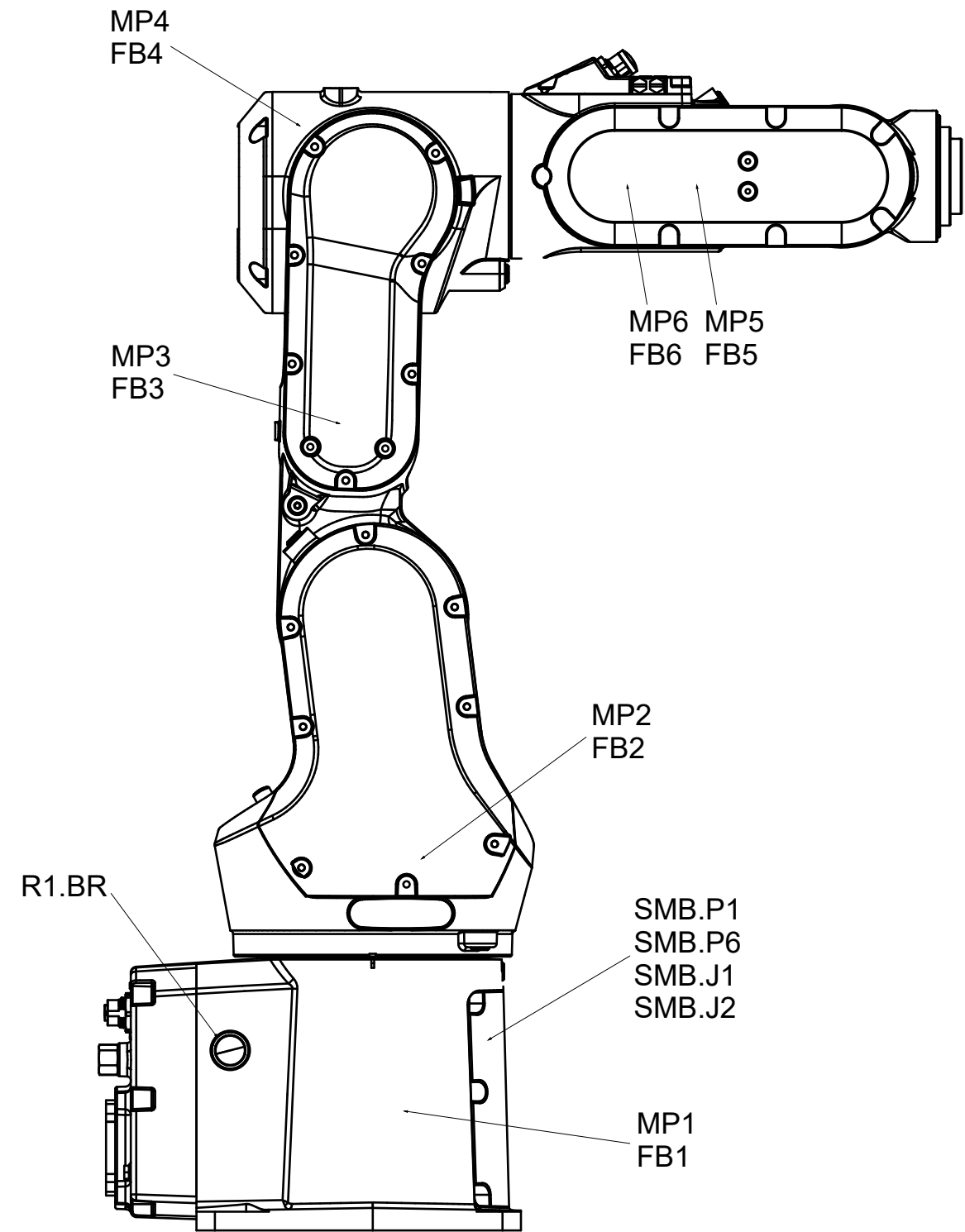
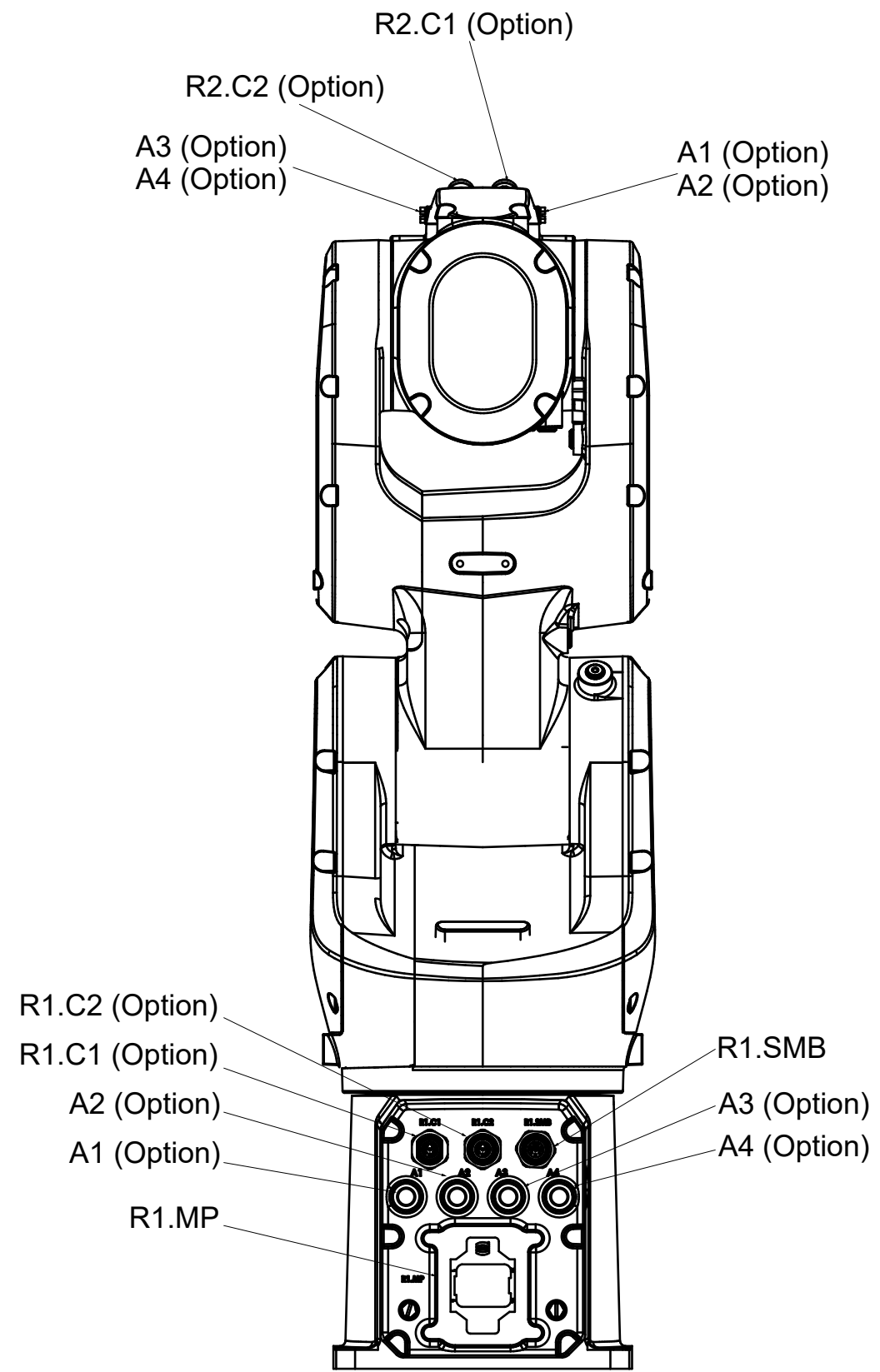
Lab/Office:  
RA/RDP

IRB1100  
SYSTEM OVERVIEW

|                     |   |
|---------------------|---|
| Status:<br>Approved | Plant: =<br>Location: +<br>Sublocation: + |
|---------------------|---|

|                                |                |                                |
|--------------------------------|----------------|--------------------------------|
| Document no.<br>3HAC066314-009 | Rev. Ind<br>02 | Page 10<br>Next 11<br>Total 17 |
|--------------------------------|----------------|--------------------------------|

We reserve all rights in this document and in the information contained therein. Reproduction, use or disclosure to third parties without express authority is strictly forbidden. © Copyright 2003 ABB



Latest revision:  
Rev02 Add R1.C1 floor cable information

Prepared by, date: CNQIL12      Approved by, date: CNKEWAN10

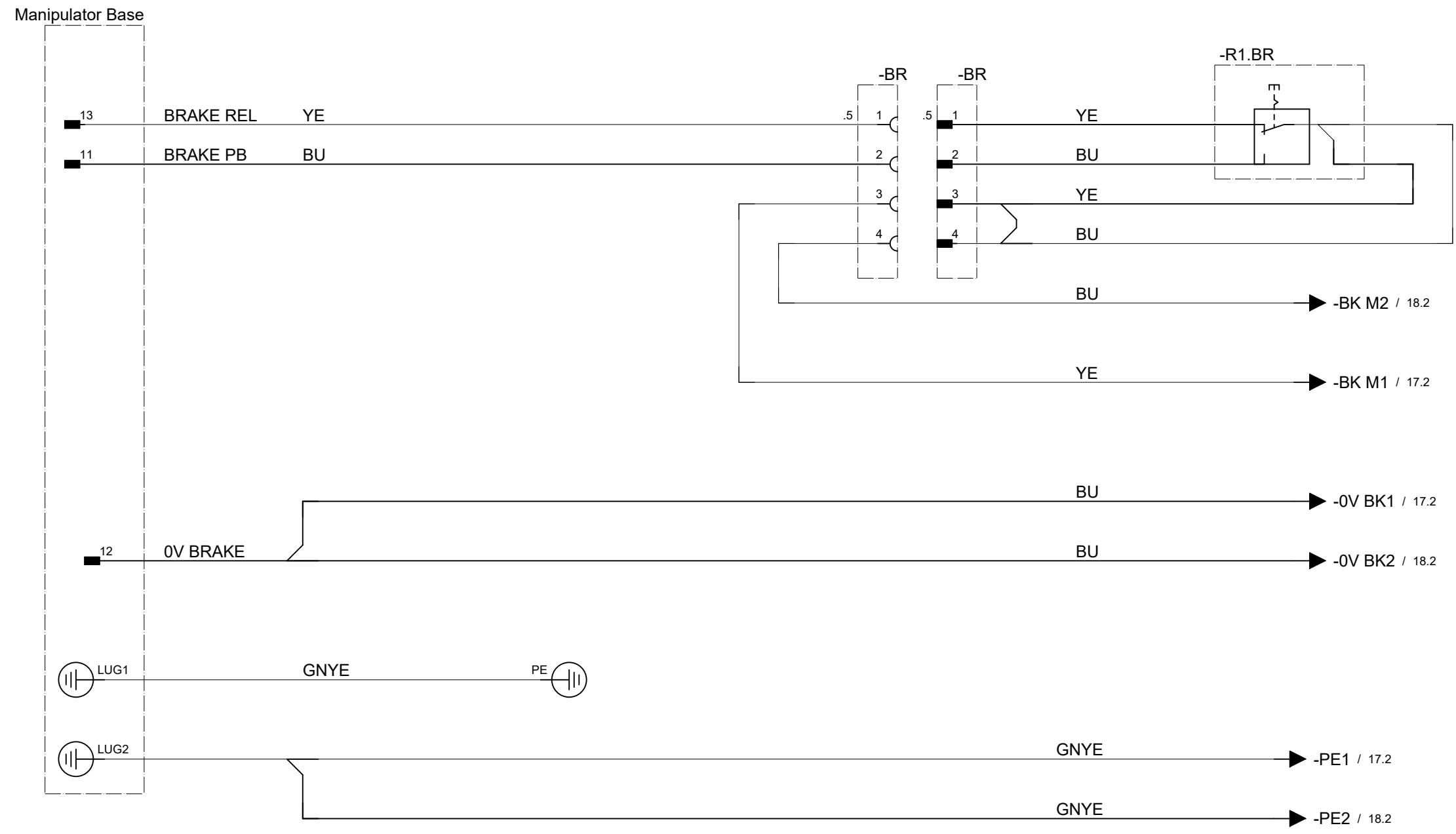


Lab/Office:  
RA/RDP

IRB1100  
CONNECTION POINT LOCATION

|                                |                                     |                                |
|--------------------------------|-------------------------------------|--------------------------------|
| Status:<br>Approved            | Plant:<br>Location:<br>Sublocation: | =<br>+<br>+                    |
| Document no.<br>3HAC066314-009 | Rev. Ind<br>02                      | Page 11<br>Next 15<br>Total 17 |

We reserve all rights in this document and in the information contained therein. Reproduction, use or disclosure to third parties without express authority is strictly forbidden. © Copyright 2003 ABB



Latest revision:  
Rev02 Add R1.C1 floor cable information

Prepared by, date: CNQIL12      Approved by, date: CNKEWAN10



Lab/Office:  
RA/RDP

IRB1100  
BRAKE RELEASE UNIT

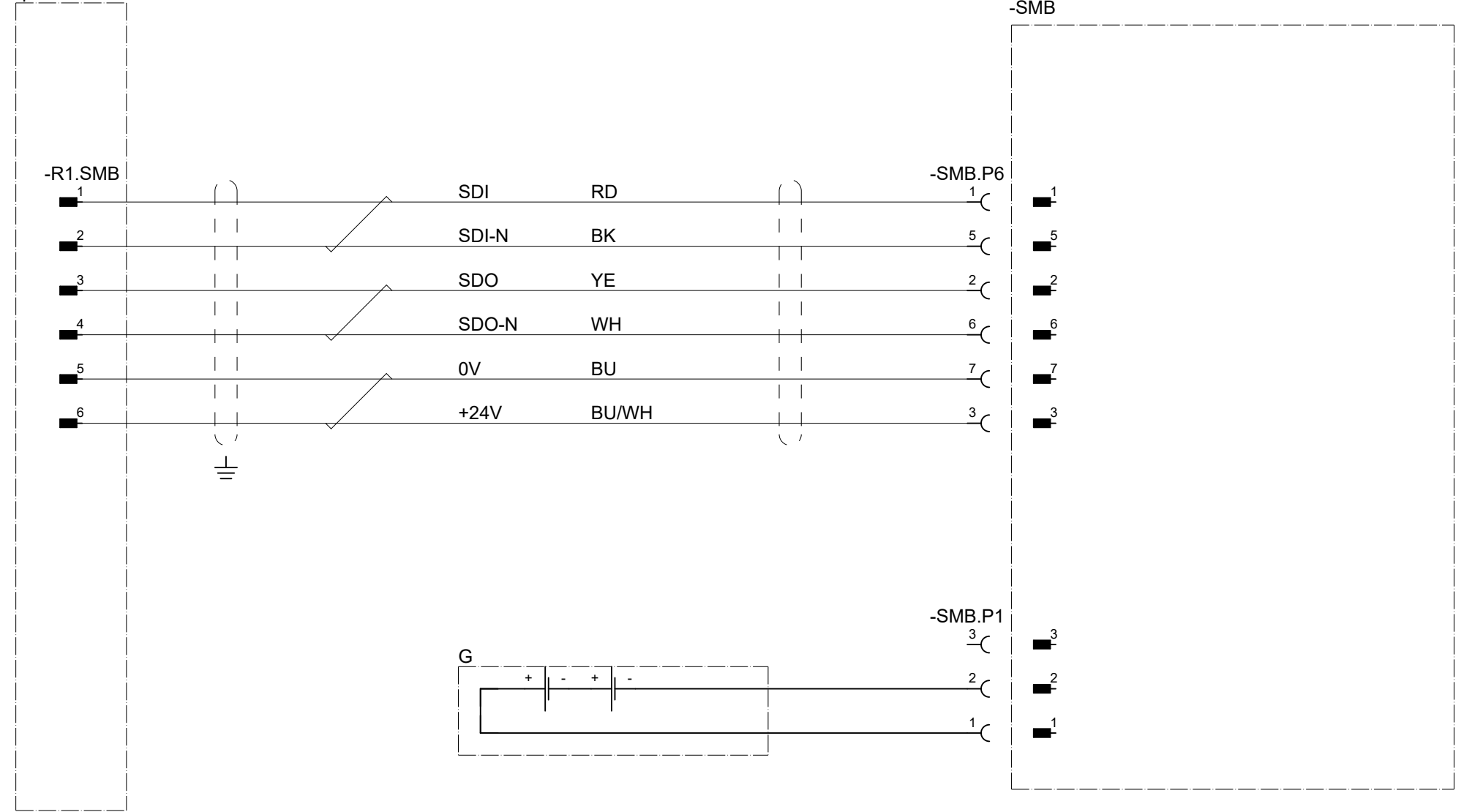
Status: Approved      Plant: =  
Location: +  
Sublocation: +

Document no. 3HAC066314-009      Rev. Ind 02      Page 15  
Next 16  
Total 17



We reserve all rights in this document and in the information contained therein. Reproduction, use or disclosure to third parties without express authority is strictly forbidden. © Copyright 2003 ABB

Manipulator Base



Latest revision:  
Rev02 Add R1.C1 floor cable information

Prepared by, date: CNQIL12      Approved by, date: CNKEWAN10



Lab/Office:  
RA/RDP

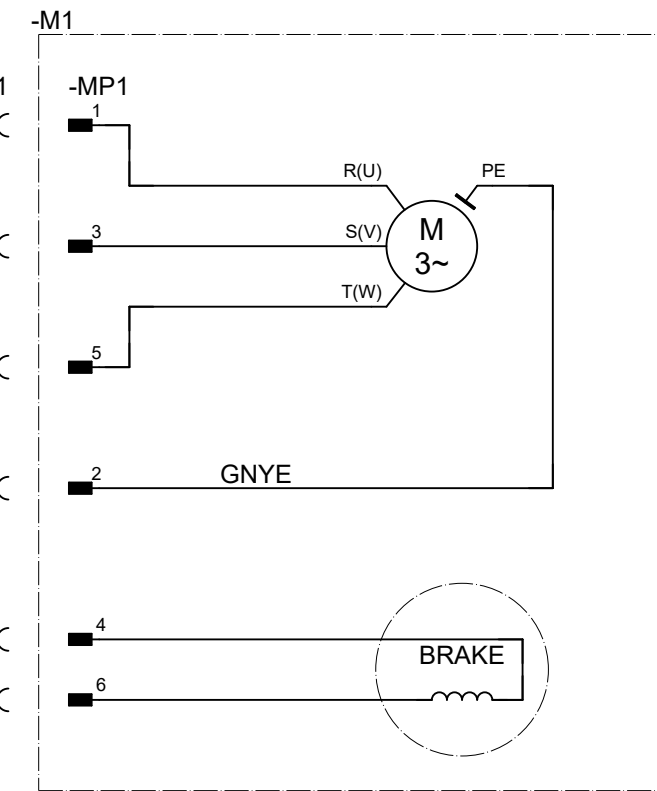
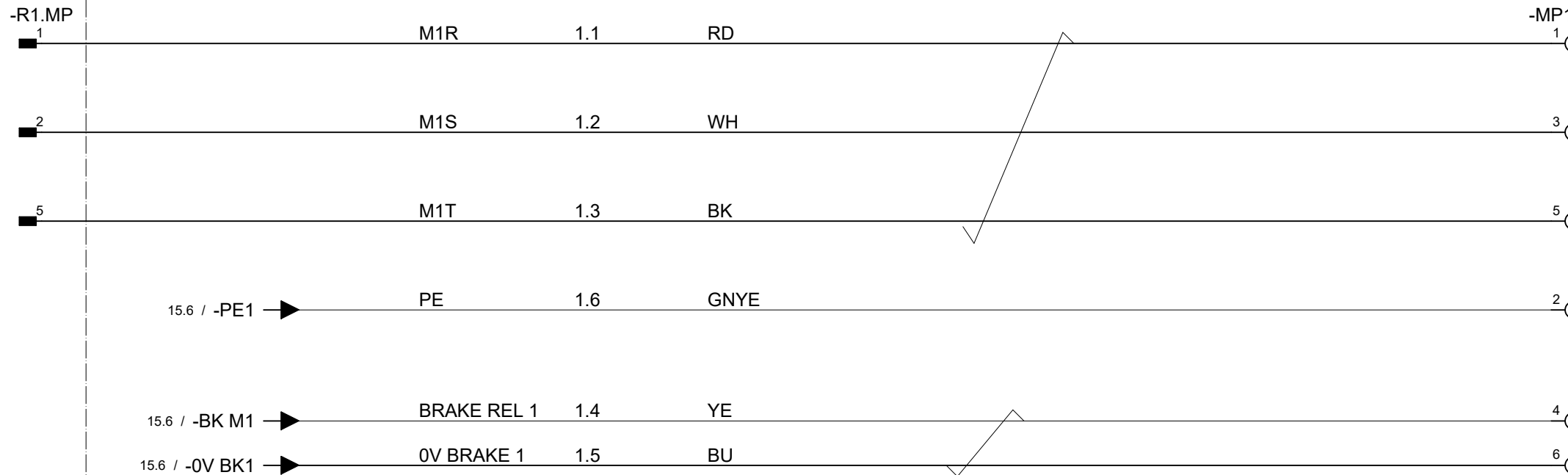
IRB1100  
SERIAL MEASUREMENT BOARD

Status: Approved      Plant: =  
Location: +  
Sublocation: +

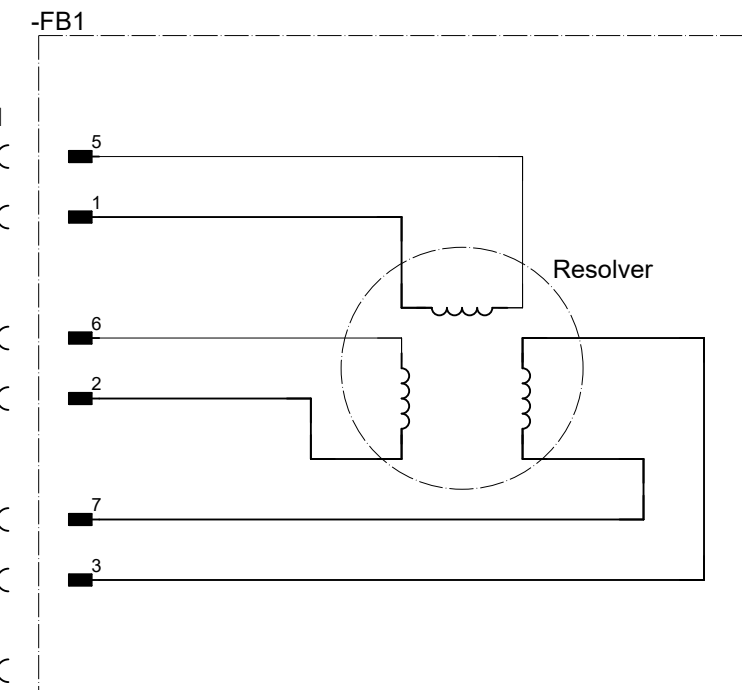
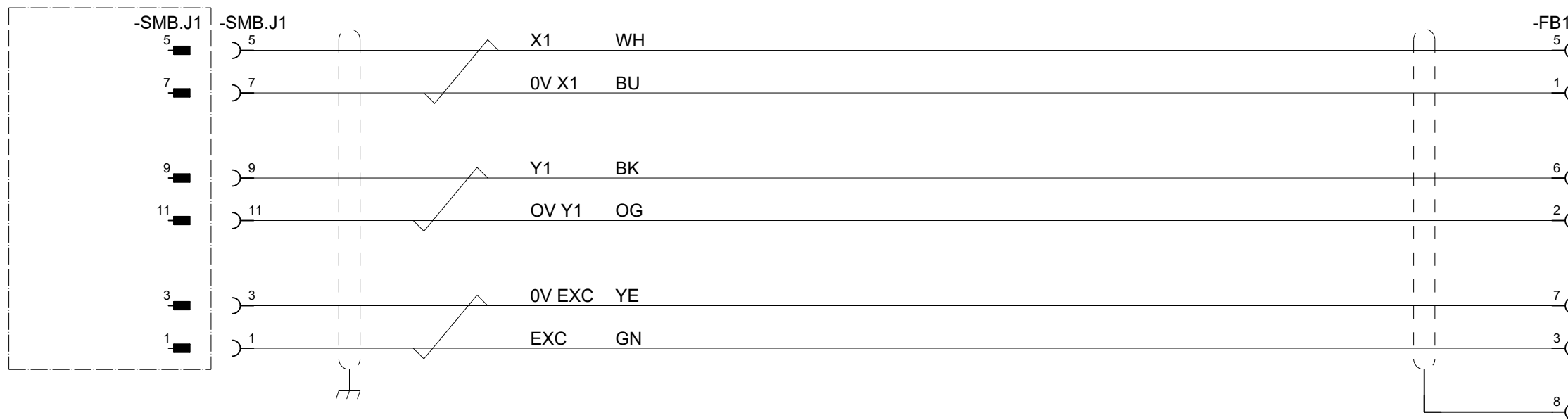
Document no. 3HAC066314-009      Rev. Ind 02      Page 16  
Next 17  
Total 17

We reserve all rights in this document and in the information contained therein. Reproduction, use or disclosure to third parties without express authority is strictly forbidden. © Copyright 2003 ABB

Manipulator Base



-SMB



Latest revision:  
Rev02 Add R1.C1 floor cable information



Lab/Office:  
RA/RDP

IRB1100  
AXIS 1

Status:  
Approved

Plant: =  
Location: +  
Sublocation: +

Prepared by, date: CNQIL2

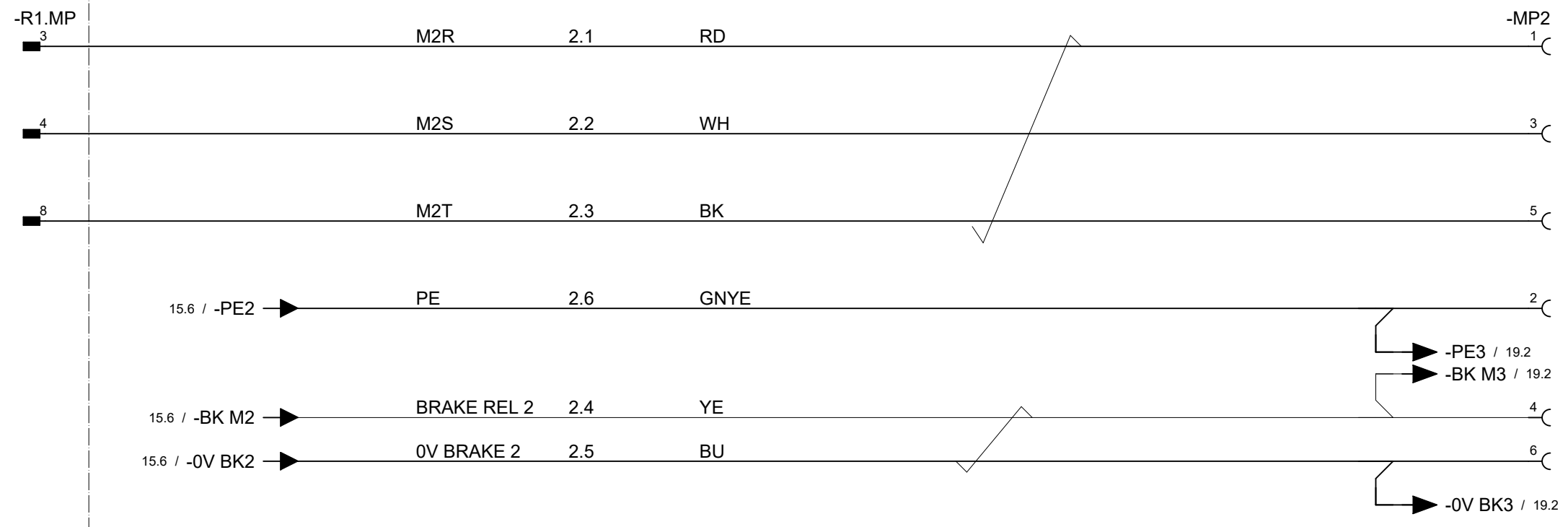
Approved by, date: CNKEWAN10

Document no.  
3HAC066314-009

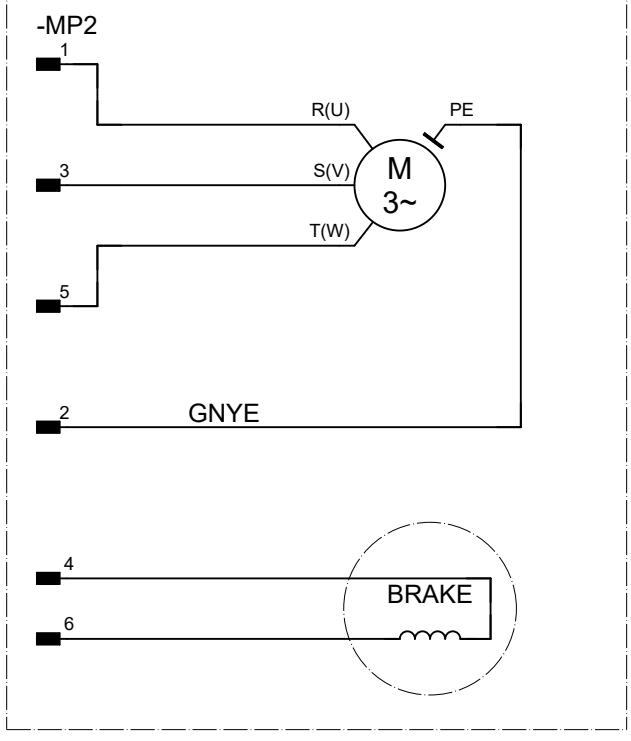
|          |          |
|----------|----------|
| Rev. Ind | Page 17  |
| 02       | Next 18  |
|          | Total 17 |

We reserve all rights in this document and in the information contained therein. Reproduction, use or disclosure to third parties without express authority is strictly forbidden. © Copyright 2003 ABB

Manipulator Base



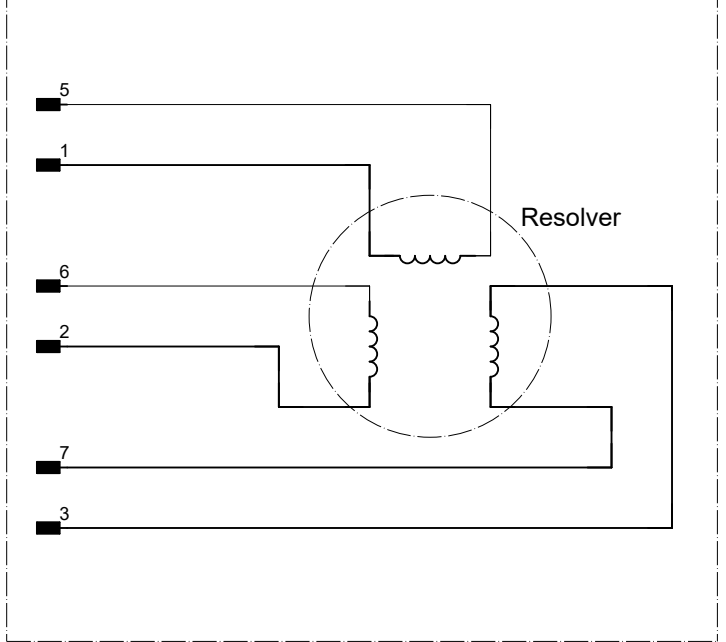
-M2



-SMB



-FB2



Latest revision:  
 Rev02 Add R1.C1 floor cable information

Prepared by, date: CNQIL12      Approved by, date: CNKEWAN10



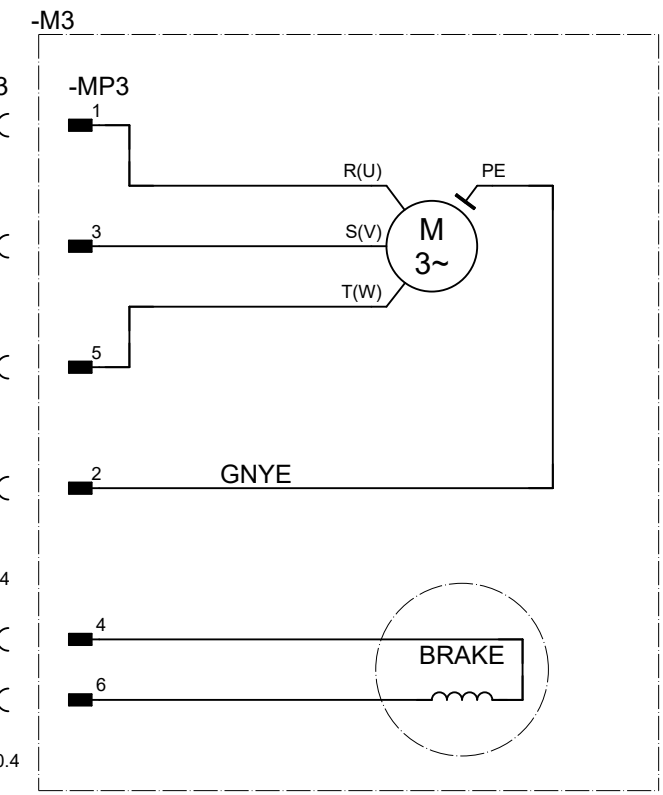
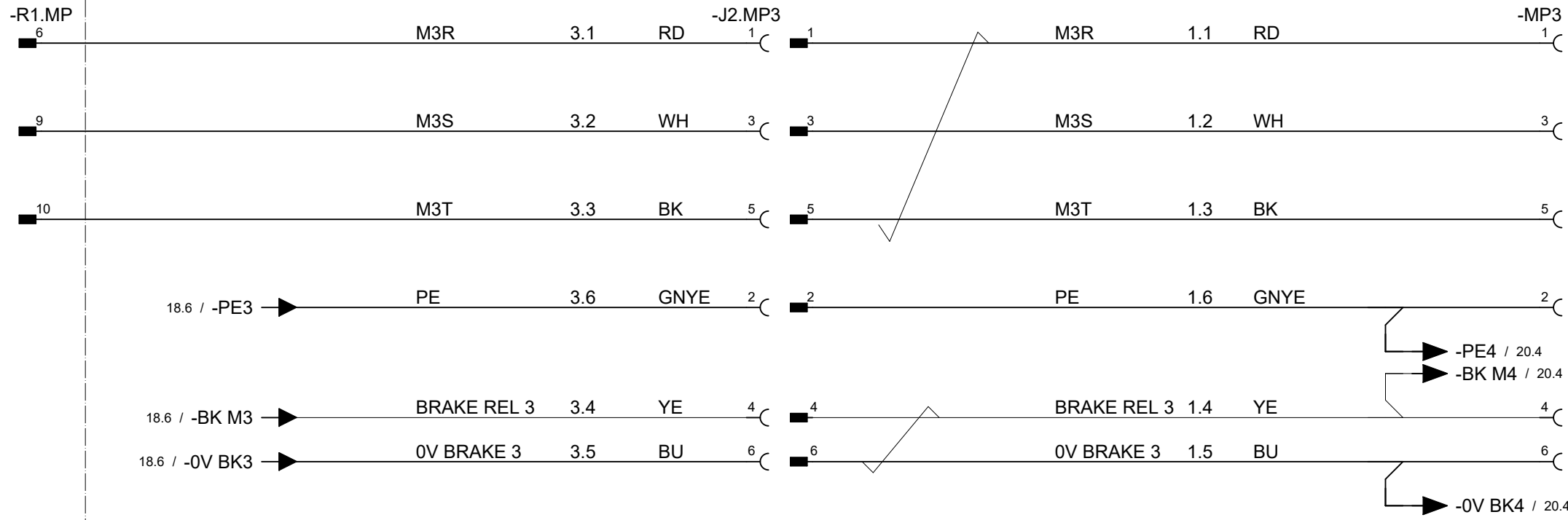
Lab/Office:  
 RA/RDP

IRB1100  
 AXIS 2

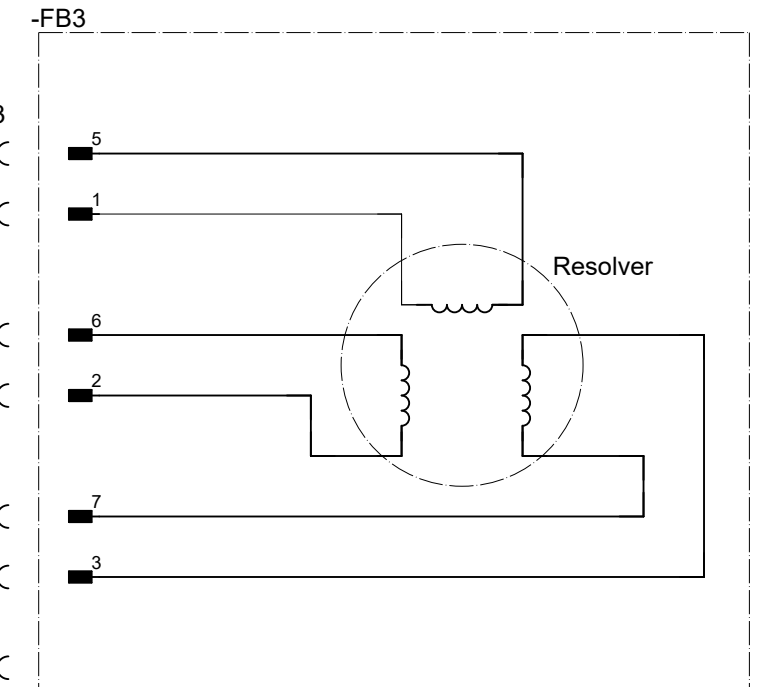
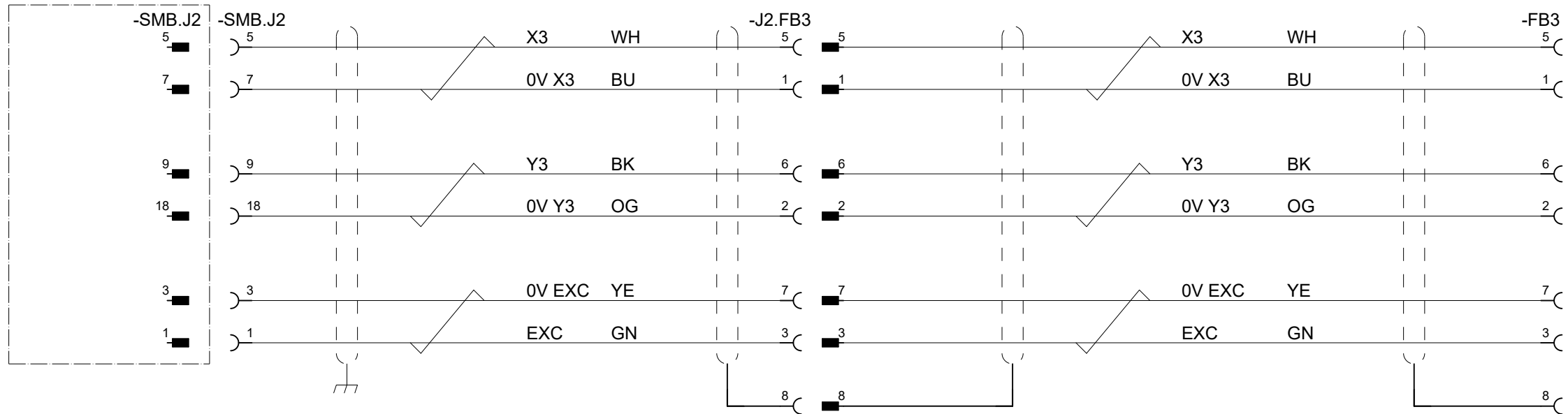
|                                |                                     |                                |
|--------------------------------|-------------------------------------|--------------------------------|
| Status:<br>Approved            | Plant:<br>Location:<br>Sublocation: | =<br>+<br>+                    |
| Document no.<br>3HAC066314-009 | Rev. Ind<br>02                      | Page 18<br>Next 19<br>Total 17 |

We reserve all rights in this document and in the information contained therein. Reproduction, use or disclosure to third parties without express authority is strictly forbidden. © Copyright 2003 ABB

Manipulator Base



-SMB



Latest revision:  
Rev02 Add R1.C1 floor cable information

Prepared by, date: CNQIL12 Approved by, date: CNKEWAN10



Lab/Office:  
RA/RDP

IRB1100  
AXIS 3

Status:  
Approved

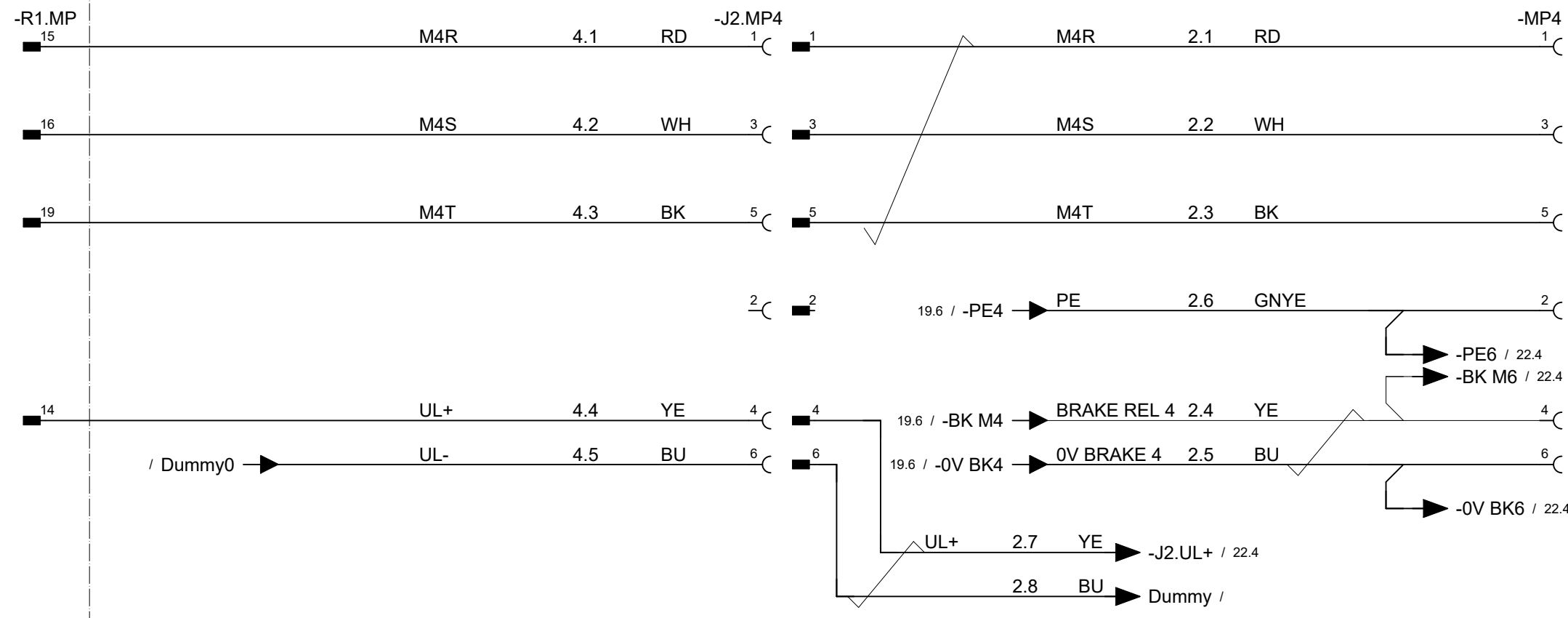
Plant: =  
Location: +  
Sublocation: +

Document no.  
3HAC066314-009

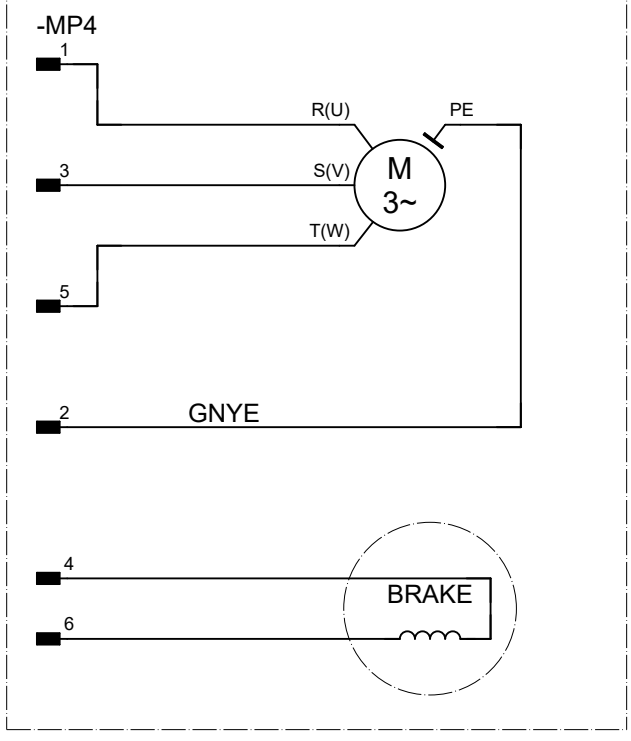
Rev. Ind Page 19  
02 Next 20  
Total 17

We reserve all rights in this document and in the information contained therein. Reproduction, use or disclosure to third parties without express authority is strictly forbidden. © Copyright 2003 ABB

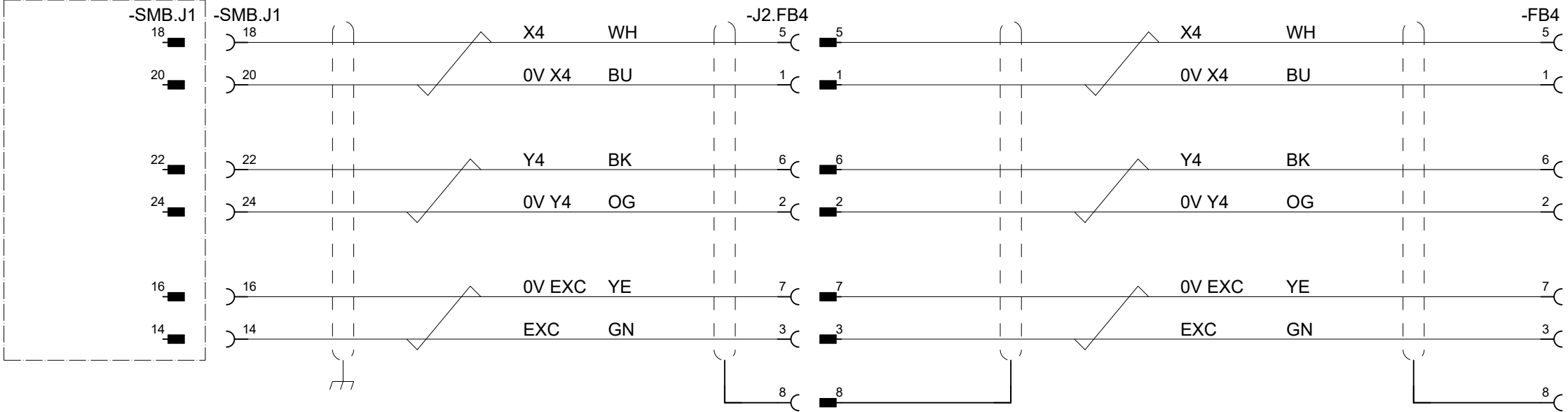
Manipulator Base



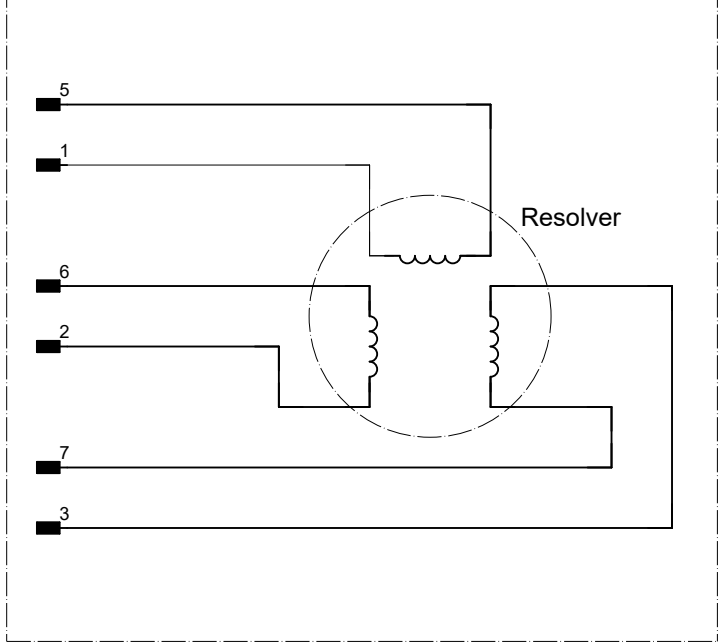
-M4



-SMB



-FB4



Latest revision:  
Rev02 Add R1.C1 floor cable information

Prepared by, date: CNQIL12      Approved by, date: CNKEWAN10



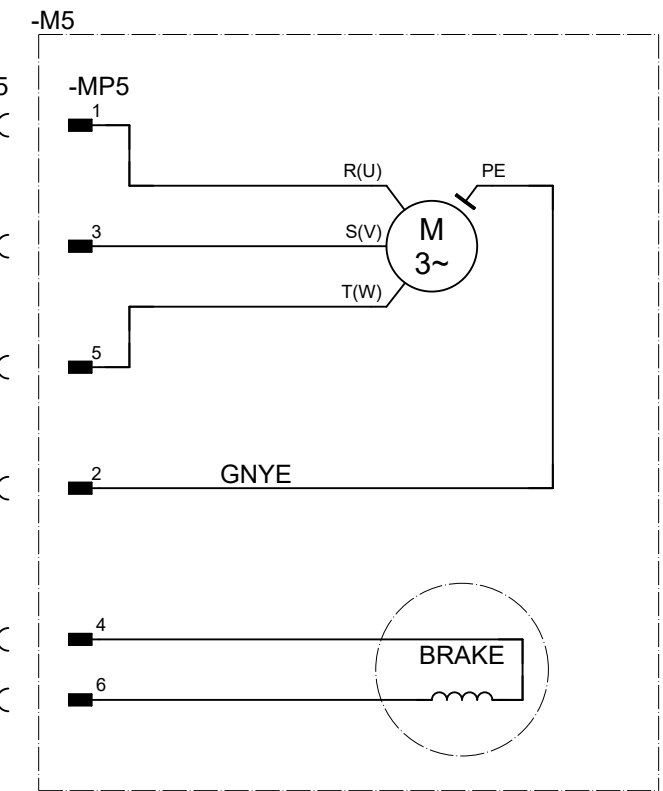
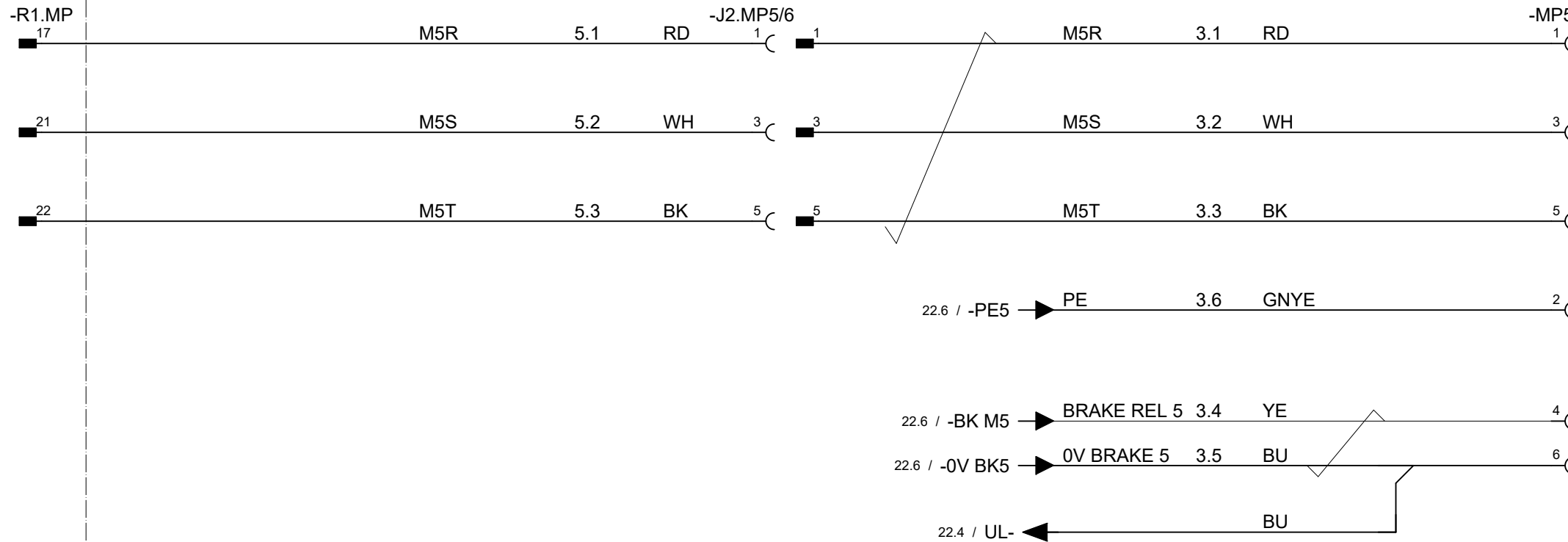
Lab/Office:  
RA/RDP

IRB1100  
AXIS 4

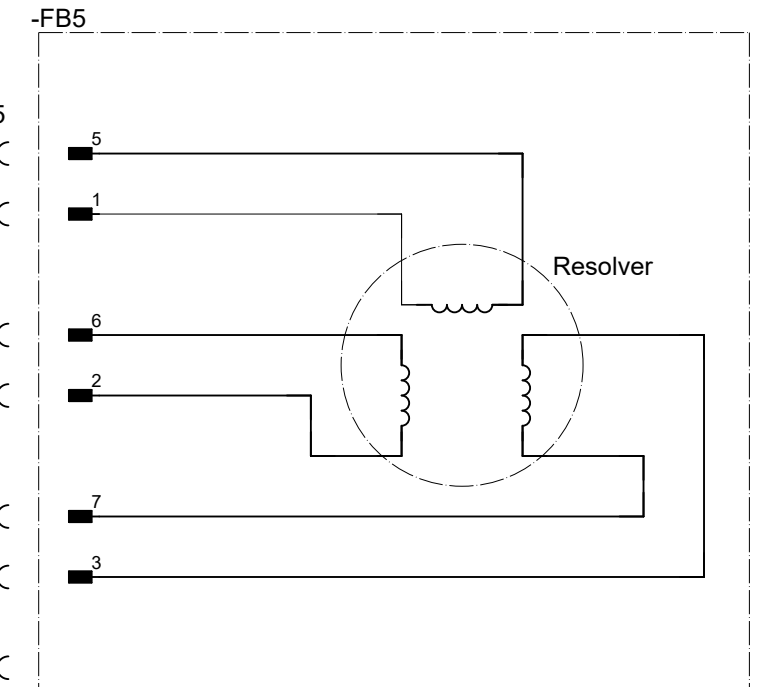
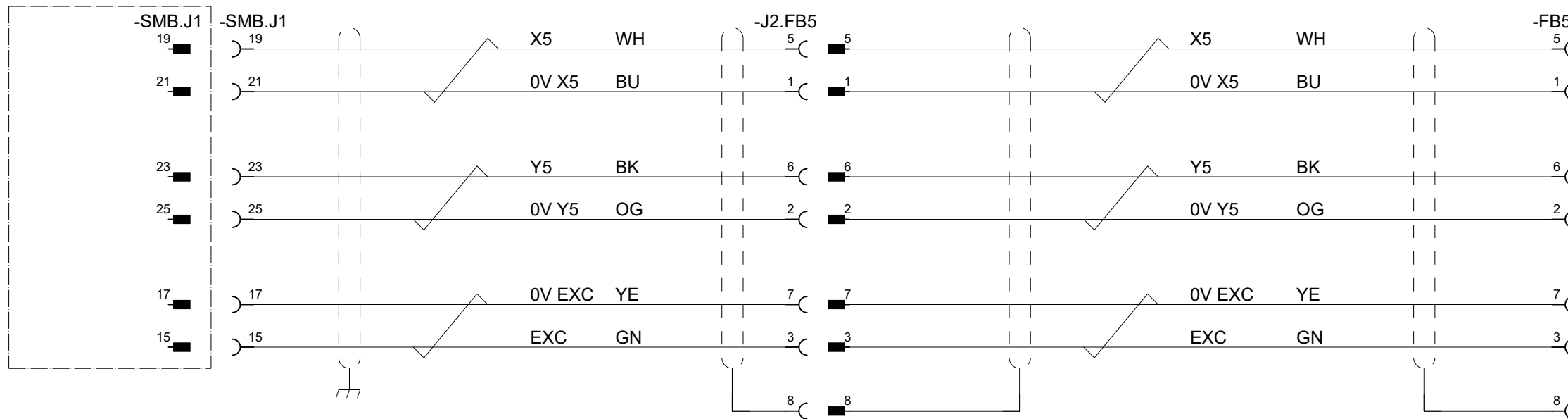
|                                |                                     |                                |
|--------------------------------|-------------------------------------|--------------------------------|
| Status:<br>Approved            | Plant:<br>Location:<br>Sublocation: | =<br>+<br>+                    |
| Document no.<br>3HAC066314-009 | Rev. Ind<br>02                      | Page 20<br>Next 21<br>Total 17 |

We reserve all rights in this document and in the information contained therein. Reproduction, use or disclosure to third parties without express authority is strictly forbidden. © Copyright 2003 ABB

Manipulator Base



-SMB



Latest revision:  
Rev02 Add R1.C1 floor cable information

Prepared by, date: CNQIL12 Approved by, date: CNKEWAN10



Lab/Office:  
RA/RDP

IRB1100  
AXIS 5

Status:  
Approved

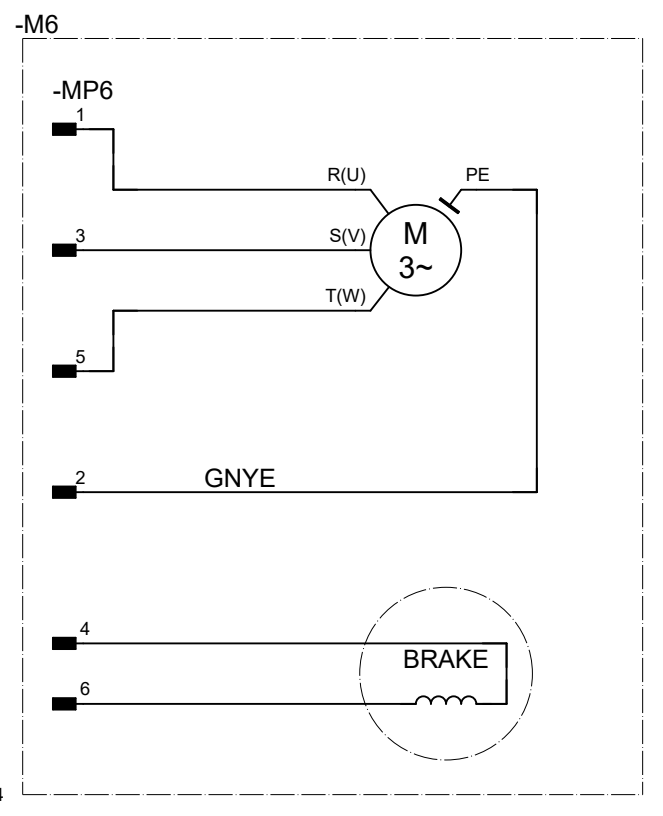
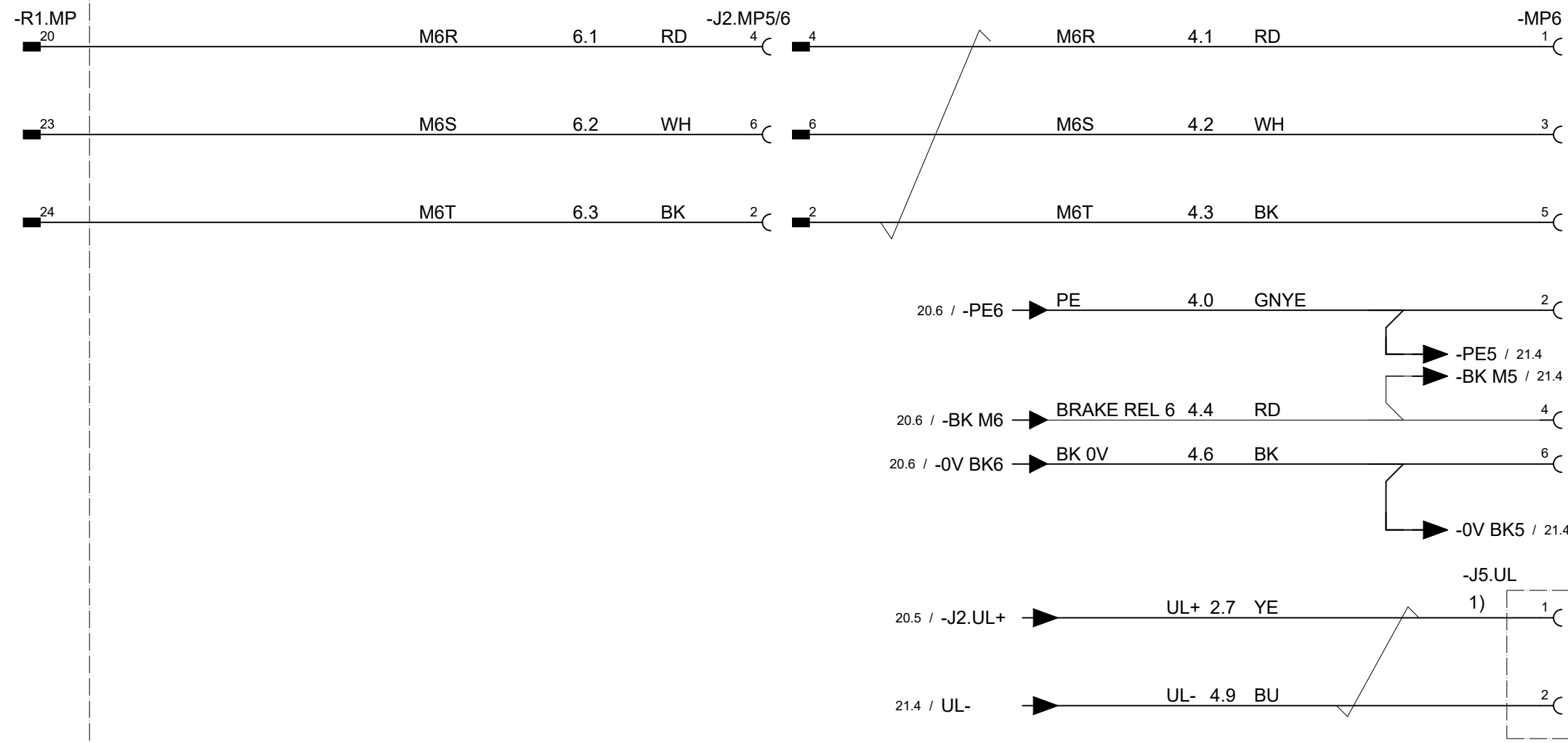
Plant: =  
Location: +  
Sublocation: +

Document no.  
3HAC066314-009

Rev. Ind  
02  
Page 21  
Next 22  
Total 17

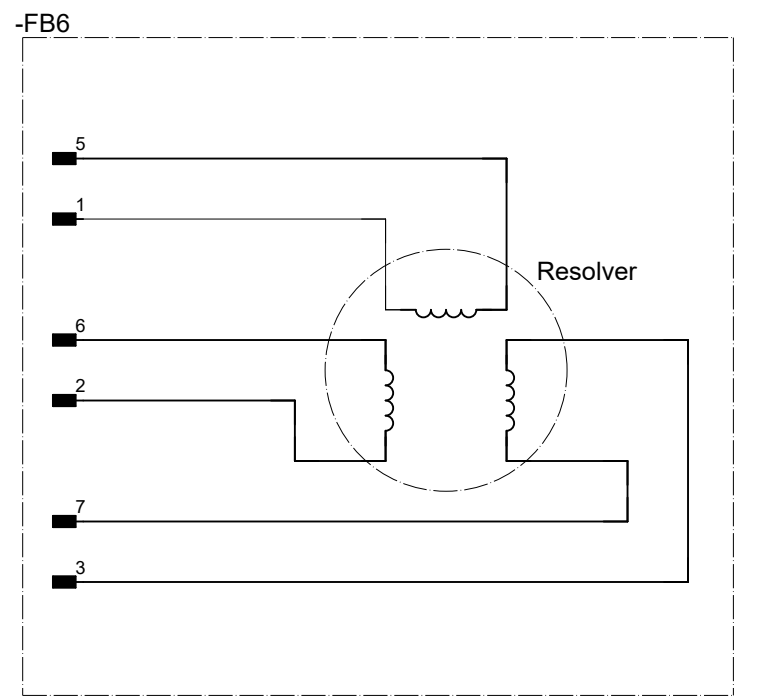
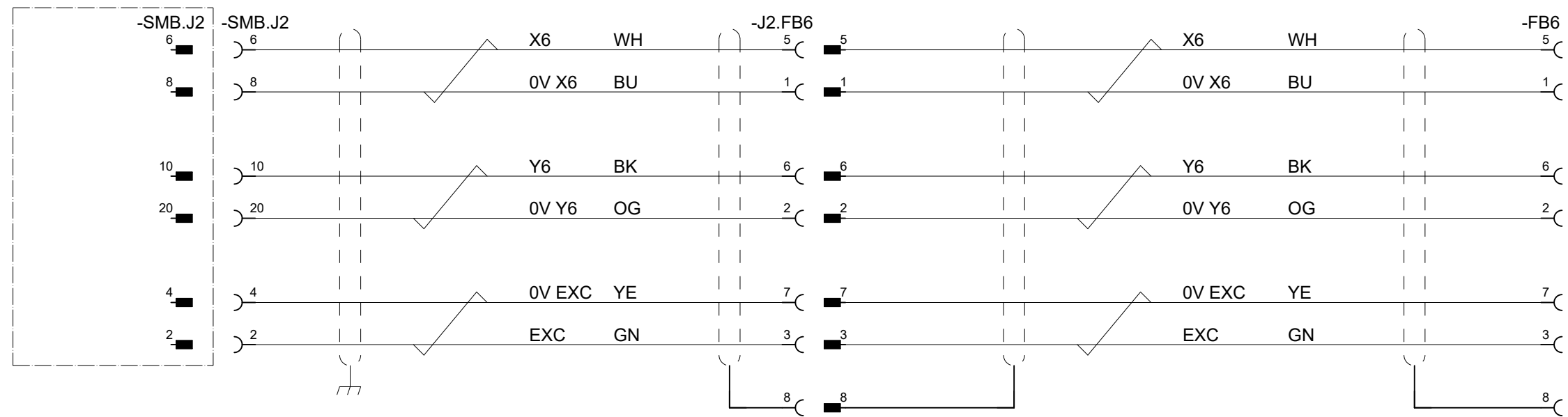
We reserve all rights in this document and in the information contained therein. Reproduction, use or disclosure to third parties without express authority is strictly forbidden. © Copyright 2003 ABB

Manipulator Base



1) J5.UL is only reserved for UL lamp.

-SMB



Latest revision:  
Rev02 Add R1.C1 floor cable information

Prepared by, date: CNQIL12      Approved by, date: CNKEWAN10

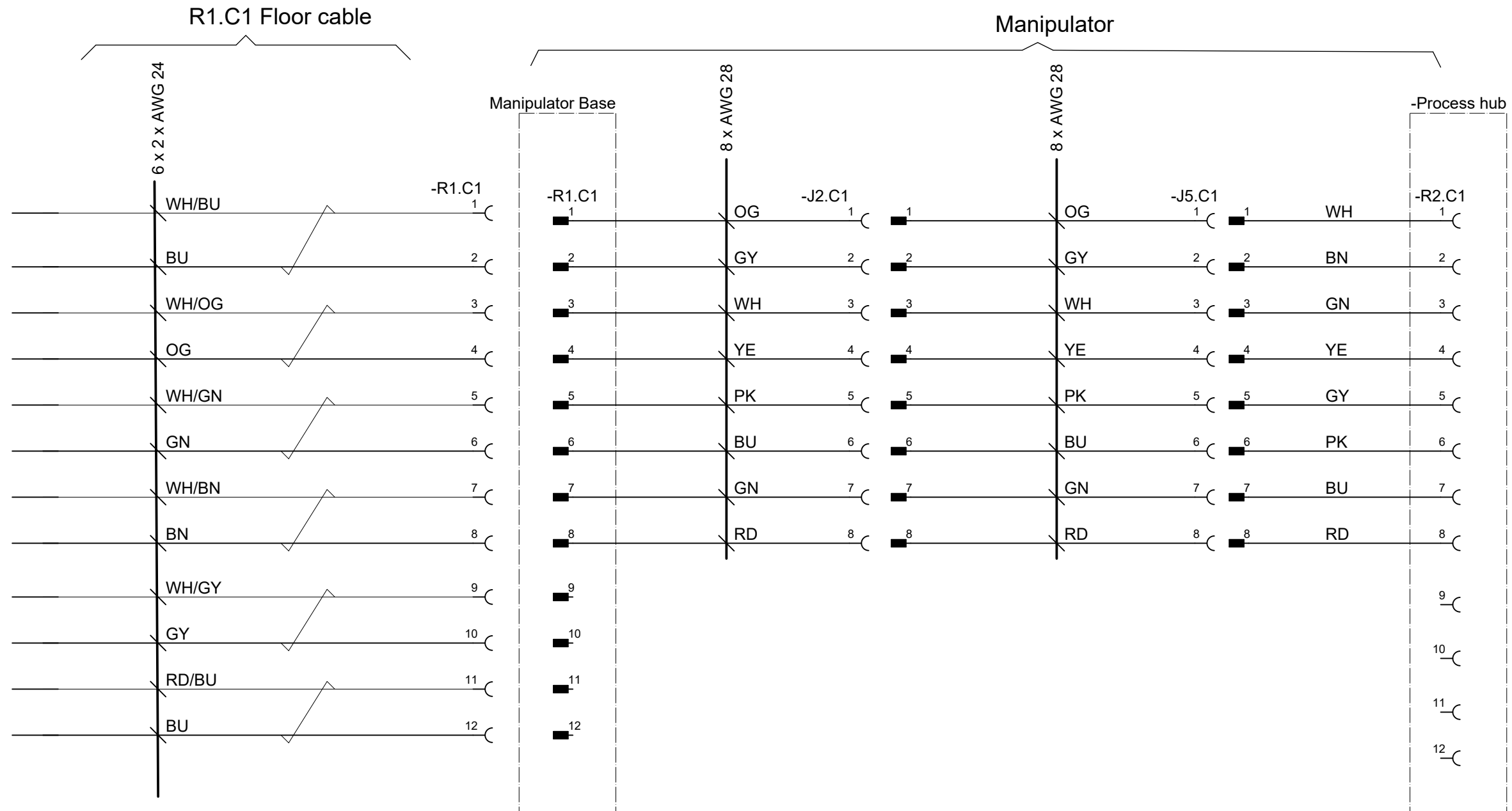


Lab/Office:  
RA/RDP

IRB1100  
AXIS 6

|                                |                                     |                                |
|--------------------------------|-------------------------------------|--------------------------------|
| Status:<br>Approved            | Plant:<br>Location:<br>Sublocation: | =<br>+<br>+                    |
| Document no.<br>3HAC066314-009 | Rev. Ind<br>02                      | Page 22<br>Next 23<br>Total 17 |

Free end wire



Note : 1) Maximum rating in each C1 wire: 30V, 1.5A. Stresses above the limitation may cause permanent damage to the manipulator.

Latest revision:  
Rev02 Add R1.C1 floor cable information



Lab/Office:  
RA/RDP

IRB1100  
CUSTOMER CONNECTION

Status:  
Approved

Plant: =  
Location: +  
Sublocation: +

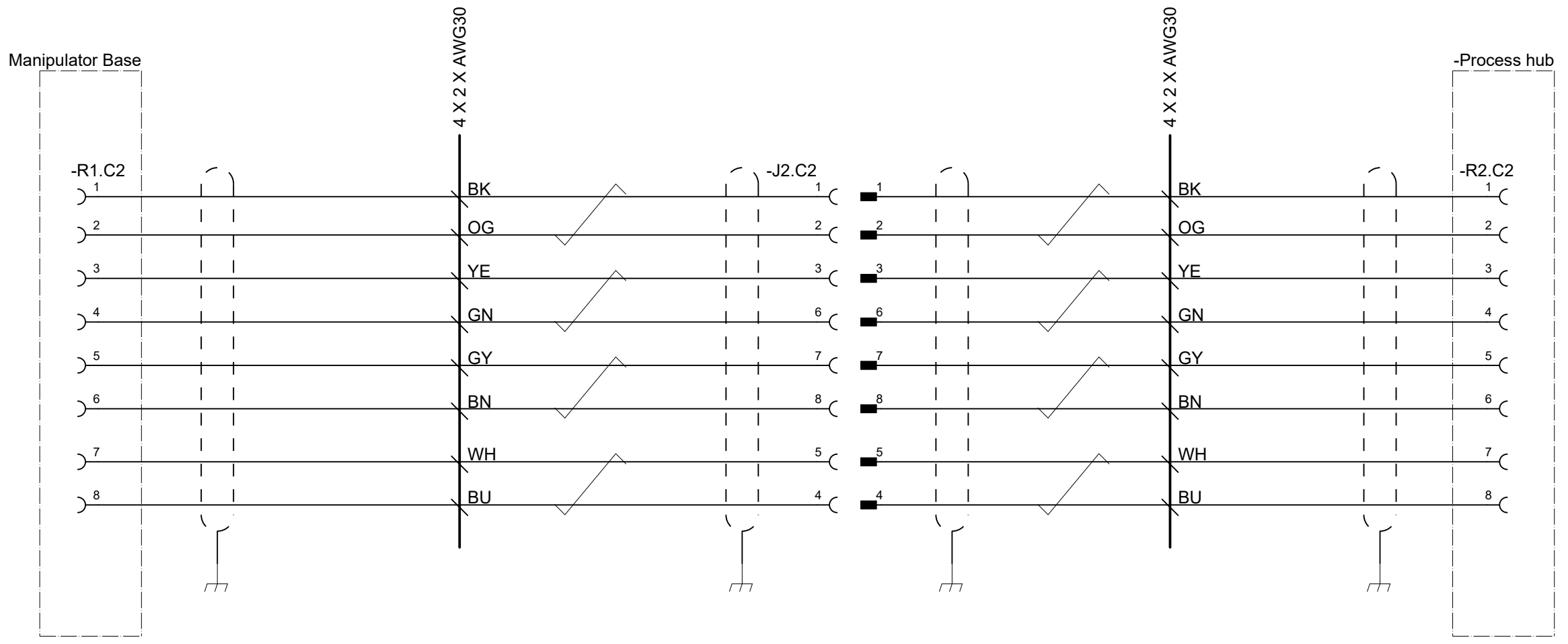
Document no.  
3HAC066314-009

Rev. Ind  
02  
Page 23  
Next 24  
Total 17


Prepared by, date: CNQIL12 Approved by, date: CNKEWAN10



We reserve all rights in this document and in the information contained therein. Reproduction, use or disclosure to third parties without express authority is strictly forbidden. © Copyright 2003 ABB



Note : 1): Ethernet cable connecting instruction 3HAC063936-005  
 2): Maximum rating in each C2 wire: 30V, 1A (when not using for Ethernet). Stresses above the limitation may cause permanent damage to the manipulator.

|   |                              |   |                       |                                |                                |   |
|---|------------------------------|---|-----------------------|--------------------------------|--------------------------------|---|
| Latest revision:<br>Rev02 Add R1.C1 floor cable information |                              |  | Lab/Office:<br>RA/RDP | IRB1100<br>ETHERNET CONNECTION | Status:<br>Approved            | Plant: =<br>Location: +<br>Sublocation: + |
| Prepared by, date: CNQIL12                                  | Approved by, date: CNKEWAN10 |   |                       |                                | Document no.<br>3HAC066314-009 | Rev. Ind<br>02                            |